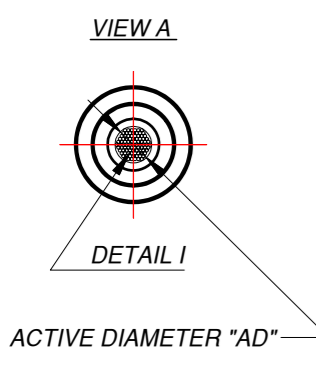
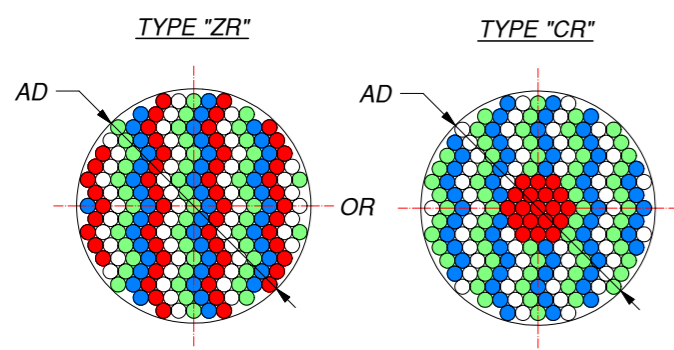


CUSTOMER DEFINED LENGTH IN [MM]						
L1	LA	L2	L3	L4	LN



DISTAL ENDS COULD BE
 FUSED PLEASE
 NOT FUSED MARK

DETAIL I
RANDOMIZATION TYPE



EXAMPLE FOR 4 LEGS:
 RED FIBERS GO TO LEG "B1"
 WHITE FIBERS GO TO LEG "B2"
 BLUE FIBERS GO TO LEG "B3"
 GREEN FIBERS GO TO LEG "B4"

CUSTOMER DEFINED FIBER DIVISION	
PERCENTS [%] OF FIBERS	FIBER DIVISION
	FROM LEG "A" GO TO LEG "B1"
	FROM LEG "A" GO TO LEG "B2"
	FROM LEG "A" GO TO LEG "B3"

	FROM LEG "A" GO TO LEG "BN"

EXAMPLE:
 25% FIBERS FROM LEG "A" GO TO LEG "B1"
 25% FIBERS FROM LEG "A" GO TO LEG "B2"
 25% FIBERS FROM LEG "A" GO TO LEG "B3"
 25% FIBERS FROM LEG "A" GO TO LEG "B4"

MLFB1- 3.1 F / 2000 / / 4 R S3 GM

ACTIVE DIAMETER "AD" IN [MM] CUSTOMER DEFINED

DISTAL END ARE FUSED
 F FUSED
 N NOT FUSED

LENGTH "L1" IN [MM] CUSTOMER DEFINED

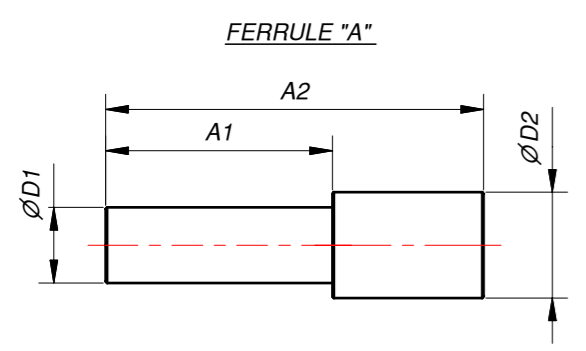
RANDOMIZATION
 TYPE "ZR"
 CR TYPE "CR"
 CD CUSTOMER

NUMBER OF LEGS CUSTOMER DEFINED

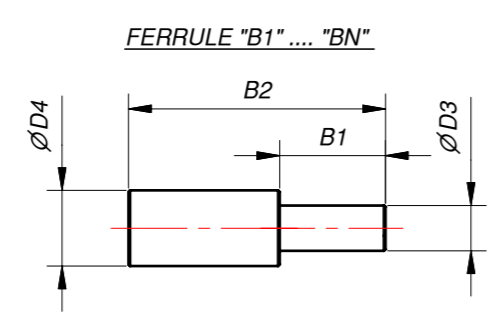
FIBERS JACKET ARE REMOVED
 NOT REMOVED
 R REMOVED

FERRULES MATERIAL
 S3 STAINLES STEEL
 A ALUMINIUM
 BA BLACK ALUMINIUM
 P PLASTIC
 CD CUSTOMER DEFINED

JACKETING TYPE
 P PVC
 GM GALVANIZED STEEL
 PVC MONOCOIL
 SS STAINLESS STEEL
 S SILICONE
 CD CUSTOMER DEFINED



CUSTOMER DEFINED DIMENSIONS FOR FERRULE "A" IN [MM]			
∅D1	∅D2	A1	A2



CUSTOMER DEFINED DIMENSIONS FOR FERRULES "B1" "BN" IN [MM]			
∅D3	∅D4	B1	B2

FERRULES COULD BE MADE IN ACCORDANCE WITH CUSTOMER DRAWINGS

- MULTIMODE OPTICAL FIBER SELECTION:**
- POSSIBLE FIBER TRANSMISSION IN THE RANGE:
 ZLUV 180 - 1200 NM (NA=0.22; 0.26; LOWER NA ON REQUEST).
 ZLWF 400 - 2200 NM (NA=0.22; 0.26; LOWER NA ON REQUEST).
 ZLPUV 250 - 1100 NM (NA=0.37).
 ZLPWF 400 - 2200 NM (NA=0.37).
 - STRESS PROOF LOAD 100KPSI.
 - FOR OTHER FIBER PARAMETERS PLEASE LOOK FIBER CATALOG.

TITLE: MLFB1 - FIBER BUNDLE FUSED MULTI LEG - BUNDLE		
SIZE: A2	DRAWING NO.: MLFB1-001-00	REV.: A
FILE NAME: MLFB1-001-00.idw	ITEM NO.:	
COMPANY: Z-LIGHT, LTD.	CODE NO.:	
HOME PAGE: HTTP://WWW.Z-LIGHT.LV	ORDER NO.:	
SCALE: DO NOT SCALE	DIMENSIONS ARE IN MM	SHEET 1 OF 1