

CODE EXPLANATION

**IFB3 - 3.2 X 0.89 / 1500 R - BA / BA - GM**

DIMENSIONS "X" AND "Y"  
CUSTOMER DEFINED  
IN [MILIMETERS]

TOTAL LENGTH "TL"  
CUSTOMER DEFINED  
IN [MILIMETERS]

FIBERS JACKET  
ARE REMOVED

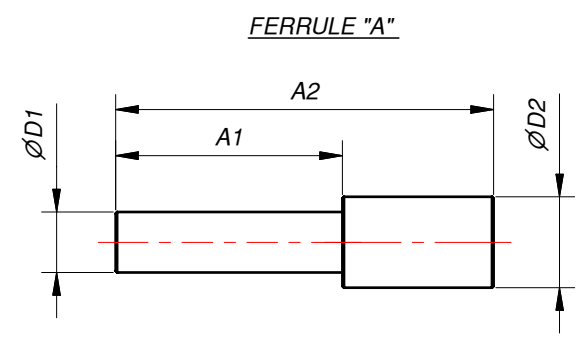
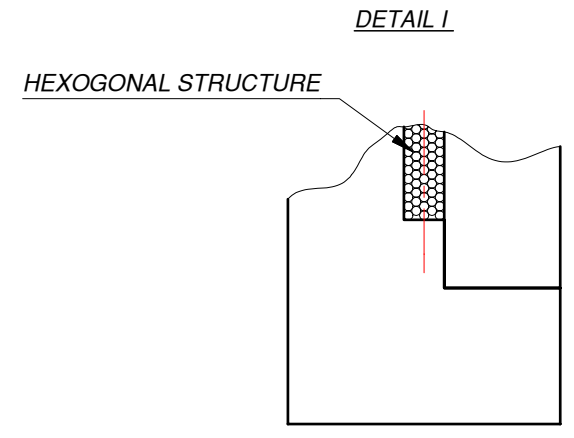
	NOT REMOVED
R	REMOVED

FERRULE "A" AND  
FERRULE "B" MATERIAL

S3	STAINLES STEEL
A	ALUMINIUM
BA	BLACK ALUMINIUM
P	PLASTIC
CD	CUSTOMER DEFINED

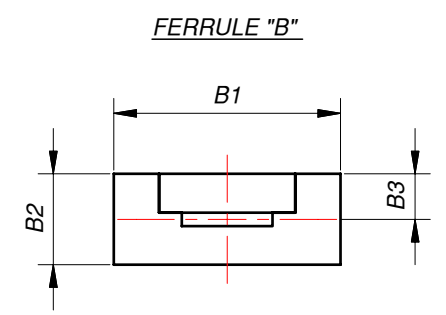
JACKETING TYPE

P	PVC
GM	GALVANIZED STEEL PVC MONOCOIL
SS	STAINLESS STEEL
S	SILICONE
CD	CUSTOMER DEFINED



CUSTOMER DEFINED DIMENSIONS  
FOR FERRULE "A" IN [MILIMETERS]

∅D1	∅D2	A1	A2



CUSTOMER DEFINED DIMENSIONS  
FOR FERRULE "B" IN [MILIMETERS]

B1	B2	B3	B4

FERRULES COULD BE MADE IN ACCORDANCE WITH CUSTOMER DRAWINGS

- MULTIMODE OPTICAL FIBER SELECTION:**
- POSSIBLE FIBER TRANSMISSION IN THE RANGE:
    - ZLUV 180 - 1200 NM (NA=0.22; 0.26; LOWER NA ON REQUEST).
    - ZLWF 400 - 2200 NM (NA=0.22; 0.26; LOWER NA ON REQUEST).
    - ZLPUV 250 - 1100 NM (NA=0.37).
    - ZLPWF 400 - 2200 NM (NA=0.37).
  - STRESS PROOF LOAD 100KPSI.
  - FOR OTHER FIBER PARAMETERS PLEASE LOOK FIBER CATALOG.

TITLE: <b>IFB3 - FIBER BUNDLE FUSED IF - BUNDLE</b>		
SIZE: <b>A3</b>	DRAWING NO.: <b>IFB3-001-00</b>	REV.: <b>A</b>
FILE NAME: IFB3-001-00.idw	ITEM NO.:	
COMPANY: Z-LIGHT, LTD.	CODE NO.:	
HOME PAGE: HTTP://WWW.Z-LIGHT.LV	ORDER NO.:	
SCALE: DO NOT SCALE	DIMENSIONS ARE IN MM	SHEET 1 OF 1