

EXAMPLE FOR 4 LEGS:
 RED FIBERS GO TO LEG "B1"
 WHITE FIBERS GO TO LEG "B2"
 BLUE FIBERS GO TO LEG "B3"
 GREEN FIBERS GO TO LEG "B4"

CUSTOMER DEFINED FIBER DIVISION	
PERCENTS [%] OF FIBERS	FIBER DIVISION
	FROM LEG "A" GO TO LEG "B1"
	FROM LEG "A" GO TO LEG "B2"
	FROM LEG "A" GO TO LEG "B3"

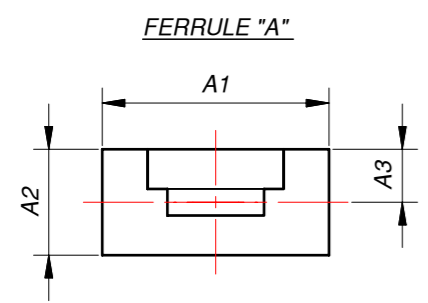
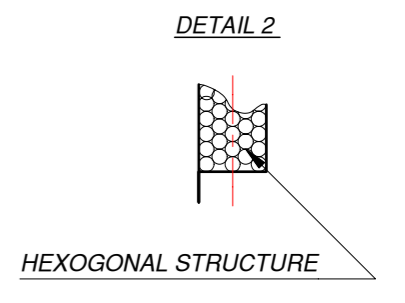
	FROM LEG "A" GO TO LEG "BN"

EXAMPLE:
 25% FIBERS FROM LEG "A" GO TO LEG "B1"
 25% FIBERS FROM LEG "A" GO TO LEG "B2"
 25% FIBERS FROM LEG "A" GO TO LEG "B3"
 25% FIBERS FROM LEG "A" GO TO LEG "B4"

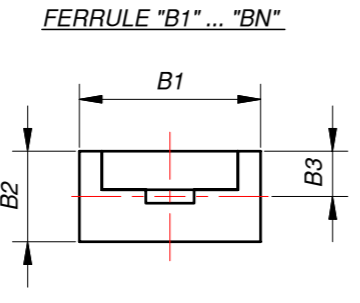
CODE EXPLANATION

MLB4-3.2 X 0.89 / 2000 / [] / 6 R S3 - GM

- 3.2 X 0.89**: DIMENSIONS "X" AND "Y" IN [MM] CUSTOMER DEFINED
- 2000**: LENGTH "L1" IN [MM] CUSTOMER DEFINED
- []**: RANDOMIZATION TYPE "ZR" (empty), "CR", or "CD"
- 6**: NUMBER OF LEGS CUSTOMER DEFINED
- R**: FIBERS JACKET ARE REMOVED (empty), "NOT REMOVED", or "REMOVED"
- S3**: FERRULES MATERIAL: S3 STAINLESS STEEL, A ALUMINIUM, BA BLACK ALUMINIUM, P PLASTIC, CD CUSTOMER DEFINED
- GM**: JACKETING TYPE: P PVC, GM GALVANIZED STEEL, PVC MONOCOIL, SS STAINLESS STEEL, S SILICONE, CD CUSTOMER DEFINED



CUSTOMER DEFINED DIMENSIONS FOR FERRULES "A" [MM]			
A1	A2	A3	A4



CUSTOMER DEFINED DIMENSIONS FOR FERRULES "B1" ... "BN" IN [MM]			
B1	B2	B3	B4

FERRULES COULD BE MADE IN ACCORDANCE WITH CUSTOMER DRAWINGS

- MULTIMODE OPTICAL FIBER SELECTION:**
- POSSIBLE FIBER TRANSMISSION IN THE RANGE:
 - ZLUV 180 - 1200 NM (NA=0.22; 0.26; LOWER NA ON REQUEST).
 - ZLWF 400 - 2200 NM (NA=0.22; 0.26; LOWER NA ON REQUEST).
 - ZLPUV 250 - 1100 NM (NA=0.37).
 - ZLPWF 400 - 2200 NM (NA=0.37).
 - STRESS PROOF LOAD 100KPSI.
 - FOR OTHER FIBER PARAMETERS PLEASE LOOK FIBER CATALOG.

TITLE: MLB4 - FIBER BUNDLE MULTI LEG - BUNDLE		
SIZE: A2	DRAWING NO.: MLB4-001-00	REV.: A
FILE NAME: MLB4-001-00.idw	ITEM NO.:	
COMPANY: Z-LIGHT, LTD.	CODE NO.:	
HOME PAGE: HTTP://WWW.Z-LIGHT.LV	ORDER NO.:	
SCALE: DO NOT SCALE	DIMENSIONS ARE IN MM	SHEET 1 OF 1