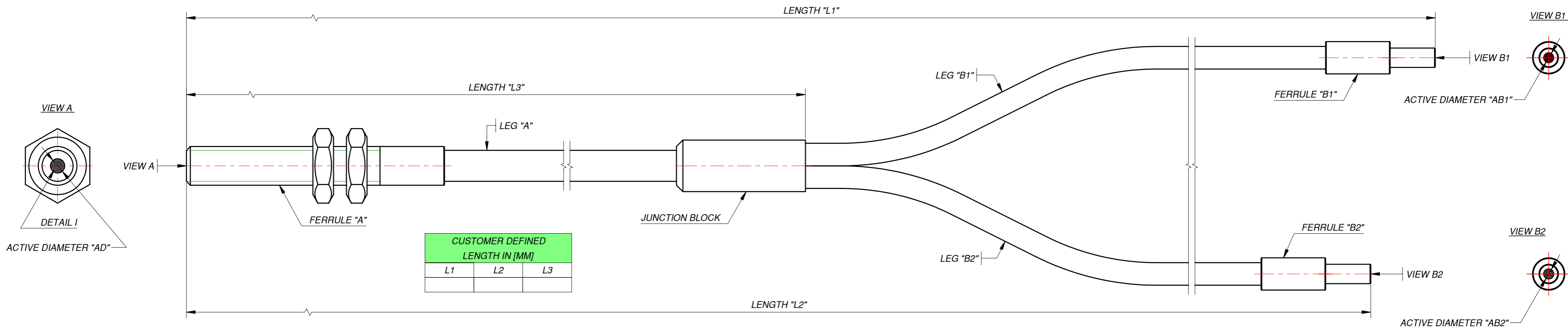
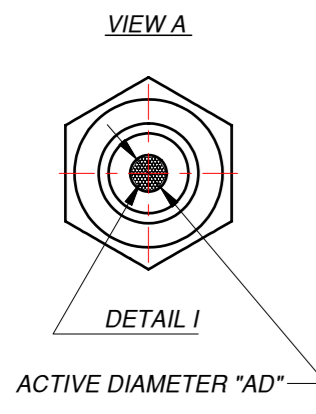


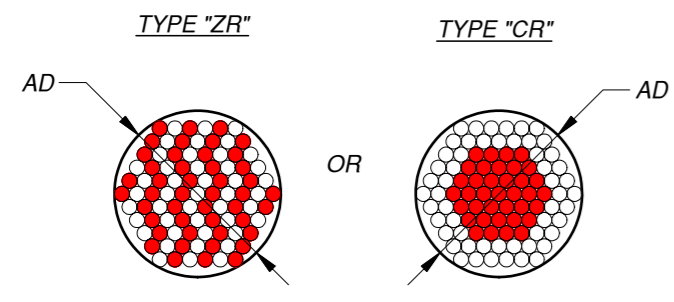
H
G
F
E
D
C
B
A



CUSTOMER DEFINED LENGTH IN [MM]		
L1	L2	L3



DETAIL I
RANDOMIZATION
RED FIBERS GO TO LEG "B1"
WHITE FIBERS GO TO LEG "B2"



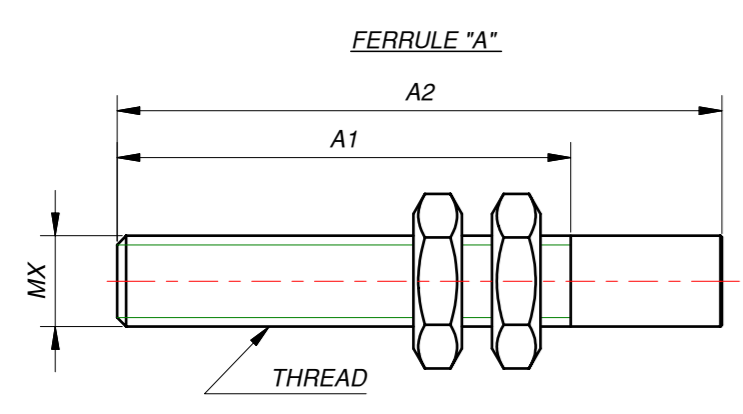
CUSTOMER DEFINED FIBER DIVISION	
PERCENTS [%] OF FIBERS	FIBER DIVISION
	FROM LEG "A" GO TO LEG "B1"
	FROM LEG "A" GO TO LEG "B2"

EXAMPLE:
60% FIBERS FROM LEG "A" GO TO LEG "B1"
40% FIBERS FROM LEG "A" GO TO LEG "B2"

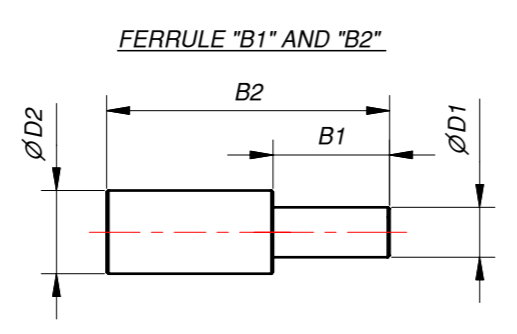
CODE EXPLANATION

YB5 - 2.2 / 1200 / [] / 50 R - S3 - GM

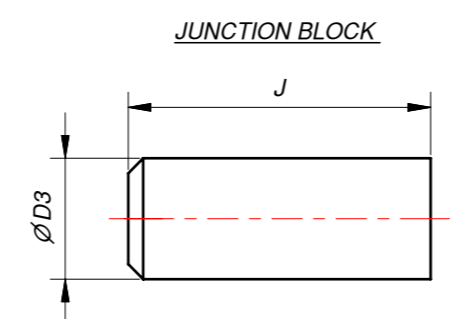
- ACTIVE DIAMETER "AD" IN [MM] CUSTOMER DEFINED
- LENGTH "L1" IN [MM] CUSTOMER DEFINED
- RANDOMIZATION: TYPE "ZR" (red fibers in center), TYPE "CR" (red fibers in ring), CUSTOMER
- PERCENTS OF FIBERS FROM LEG "A" GO TO LEG "B1" CUSTOMER DEFINED
- FIBERS JACKET ARE REMOVED: NOT REMOVED, REMOVED
- FERRULES MATERIAL: S3 STAINLES STEEL, A ALUMINIUM, BA BLACK ALUMINIUM, P PLASTIC, CD CUSTOMER DEFINED
- JACKETING TYPE: P PVC, GM GALVANIZED STEEL, SS STAINLESS STEEL, S SILICONE, CD CUSTOMER DEFINED



CUSTOMER DEFINED DIMENSIONS FOR FERRULE "A" IN [MILIMETERS]		
THREAD MX	A1	A2



CUSTOMER DEFINED DIMENSIONS FOR FERRULES "B1" AND "B2" IN [MM]			
Ø D1	Ø D2	B1	B2



JUNCTION BLOCK DIMENSIONS IN [M]		
ACTIVE DIAM. AD	Ø D3	J
0 - 2.5	8	20
2.5 - 4	13	25
4 - 6	16	30
6 - 10	22	40

- MULTIMODE OPTICAL FIBER SELECTION:**
- POSSIBLE FIBER TRANSMISSION IN THE RANGE:
 - ZLUV 180 - 1200 NM (NA=0.22; 0.26; LOWER NA ON REQUEST).
 - ZLWF 400 - 2200 NM (NA=0.22; 0.26; LOWER NA ON REQUEST).
 - ZLPUV 250 - 1100 NM (NA=0.37).
 - ZLPWF 400 - 2200 NM (NA=0.37).
 - STRESS PROOF LOAD 100KPSI.
 - FOR OTHER FIBER PARAMETERS PLEASE LOOK FIBER CATALOG.

TITLE: YB5 - FIBER BUNDLE STANDARD Y - BUNDLE		
SIZE: A2	DRAWING NO.: YB5-001-00	REV.: A
FILE NAME: YB5-001-00.idw	ITEM NO.:	
COMPANY: Z-LIGHT, LTD.	CODE NO.:	
HOME PAGE: HTTP://WWW.Z-LIGHT.LV	ORDER NO.:	
SCALE: DO NOT SCALE	DIMENSIONS ARE IN MM	SHEET 1 OF 1

FERRULES COULD BE MADE IN ACCORDANCE WITH CUSTOMER DRAWINGS