

CODE EXPLANATION

IB3 - 3.2 X 0.89 / 1500 R - BA / BA - GM

DIMENSIONS "X" AND "Y"
CUSTOMER DEFINED
IN [MILIMETERS]

TOTAL LENGTH "TL"
CUSTOMER DEFINED
IN [MILIMETERS]

FIBERS JACKET
ARE REMOVED

	NOT REMOVED
R	REMOVED

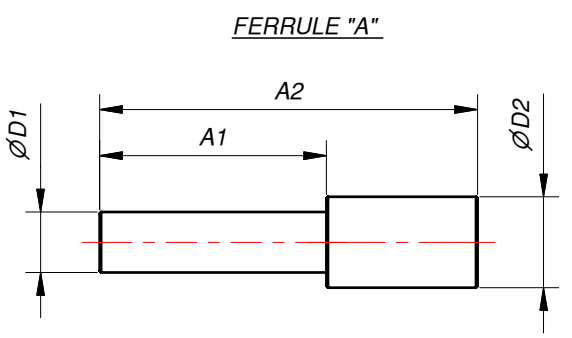
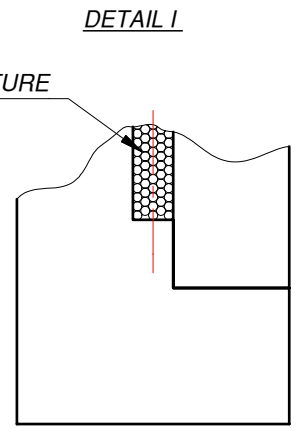
FERRULE "A" AND
FERRULE "B" MATERIAL

S3	STAINLES STEEL
A	ALUMINIUM
BA	BLACK ALUMINIUM
P	PLASTIC
CD	CUSTOMER DEFINED

JACKETING TYPE

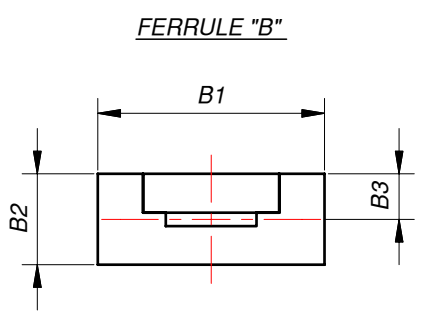
P	PVC
GM	GALVANIZED STEEL PVC MONOCOIL
SS	STAINLESS STEEL
S	SILICONE
CD	CUSTOMER DEFINED

HEXOGONAL STRUCTURE



CUSTOMER DEFINED DIMENSIONS
FOR FERRULE "A" IN [MILIMETERS]

ØD1	ØD2	A1	A2



CUSTOMER DEFINED DIMENSIONS
FOR FERRULE "B" IN [MILIMETERS]

B1	B2	B3	B4

FERRULES COULD BE MADE IN ACCORDANCE WITH CUSTOMER DRAWINGS

MULTIMODE OPTICAL FIBER SELECTION:

- POSSIBLE FIBER TRANSMISSION IN THE RANGE:
 - ZLUV 180 - 1200 NM (NA=0.22; 0.26; LOWER NA ON REQUEST).
 - ZLWF 400 - 2200 NM (NA=0.22; 0.26; LOWER NA ON REQUEST).
 - ZLPUV 250 - 1100 NM (NA=0.37).
 - ZLPWF 400 - 2200 NM (NA=0.37).
- STRESS PROOF LOAD 100KPSI.
- FOR OTHER FIBER PARAMETERS PLEASE LOOK FIBER CATALOG.

TITLE: IB3 - FIBER BUNDLE STANDARD I - BUNDLE		
SIZE: A3	DRAWING NO.: IB3-001-00	REV.: A
FILE NAME: IB3-001-00.idw	ITEM NO.:	
COMPANY: Z-LIGHT, LTD.	CODE NO.:	
HOME PAGE: HTTP://WWW.Z-LIGHT.LV	ORDER NO.:	
SCALE: DO NOT SCALE	DIMENSIONS ARE IN MM	SHEET 1 OF 1