

CODE EXPLANATION

IB2 - 3.2 X 0.89 / 1500 R - BA / BA - GM

DIMENSIONS "X" AND "Y"  
 CUSTOMER DEFINED  
 IN [MILIMETERS]

TOTAL LENGTH "TL"  
 CUSTOMER DEFINED  
 IN [MILIMETERS]

FIBERS JACKET ARE REMOVED

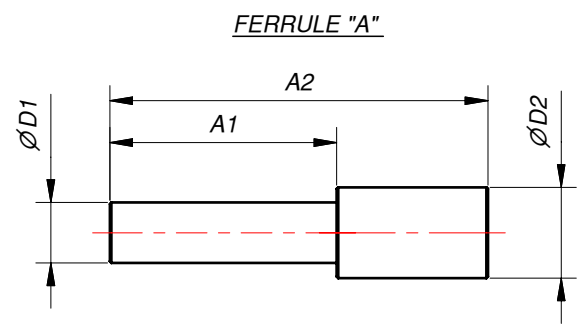
	NOT REMOVED
R	REMOVED

FERRULE "A" AND FERRULE "B" MATERIAL

S3	STAINLES STEEL
A	ALUMINIUM
BA	BLACK ALUMINIUM
P	PLASTIC
CD	CUSTOMER DEFINED

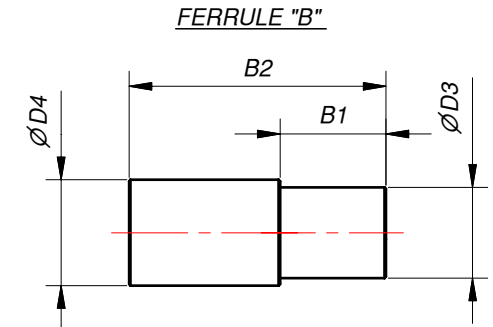
JACKETING TYPE

P	PVC
GM	GALVANIZED STEEL PVC MONOCOIL
SS	STAINLESS STEEL
S	SILICONE
CD	CUSTOMER DEFINED



CUSTOMER DEFINED DIMENSIONS FOR FERRULE "A" IN [MILIMETERS]

$\phi D1$	$\phi D2$	A1	A2



CUSTOMER DEFINED DIMENSIONS FOR FERRULE "B" IN [MILIMETERS]

$\phi D3$	$\phi D4$	B1	B2

FERRULES COULD BE MADE IN ACCORDANCE WITH CUSTOMER DRAWINGS

MULTIMODE OPTICAL FIBER SELECTION:

- POSSIBLE FIBER TRANSMISSION IN THE RANGE:  
 ZLUV 180 - 1200 NM (NA=0.22; 0.26; LOWER NA ON REQUEST).  
 ZLWF 400 - 2200 NM (NA=0.22; 0.26; LOWER NA ON REQUEST).  
 ZLPUV 250 - 1100 NM (NA=0.37).  
 ZLPWF 400 - 2200 NM (NA=0.37).
- STRESS PROOF LOAD 100KPSI.
- FOR OTHER FIBER PARAMETERS PLEASE LOOK FIBER CATALOG.

TITLE: <b>IB2 - FIBER BUNDLE STANDARD I - BUNDLE</b>		
SIZE: <b>A3</b>	DRAWING NO.: <b>IB2-001-00</b>	REV.: <b>A</b>
FILE NAME: IB2-001-00.idw	ITEM NO.:	
COMPANY: Z-LIGHT, LTD.	CODE NO.:	
HOME PAGE: HTTP://WWW.Z-LIGHT.LV	ORDER NO.:	
SCALE: DO NOT SCALE	DIMENSIONS ARE IN MM	SHEET 1 OF 1